

MUSIC THEATRE OF CONNECTICUT

MTC MAINSTAGE



LOVE
CAN TELL A MILLION
STORIES



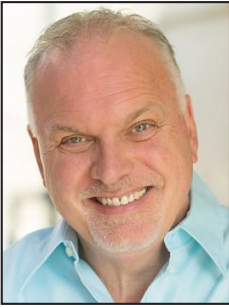
FALSETTOLAND

**Birinyi Associates is pleased to support
Music Theatre of Connecticut**

B I R I N Y I
A S S O C I A T E S I N C.

Please visit us at Birinyi.com
Westport, CT

MUSIC THEATRE OF CONNECTICUT
MTC MAINSTAGE



Dear MTC Guest,

Welcome to the *FALSETTOLAND* – the second production in MTC’s 35th season of award-winning professional theatre. First and foremost, MTC continues to rank your safety as our top priority as we once again share the communal experience of live theatre. We thank you in advance for following our safety protocols and welcome you back to the magic of MTC’s immersive live performance experience.

FALSETTOLAND has long been on our list of “must do” musicals. Following *IN TROUSERS* and *MARCH OF THE FALSETTOS*, it is the third in a trio of chamber musicals by William Finn centering on Marvin, his wife Trina, his psychiatrist Mendel, his son Jason, and his lover Whizzer. *FALSETTOLAND* also forms the second act of the 1990 Broadway musical *FALSETTOS*, with *MARCH OF THE FALSETTOS* as the first act. The piece is a multi-award winner, including The Outer Critics Circle award for best musical.

For me, the show was life changing, not only in its brilliant writing, but in its multi-layered storytelling of universal themes including the challenges of non-traditional families, the vital support our friends (many of whom become our chosen families), our community, and the impact of an unforeseen public health crisis on ourselves and those we love. While the show is set in 1981 in the early days of the AIDS crisis, we now have faced the challenges of a public health crisis, and can understand personally what these characters were facing several decades ago.

FALSETTOLAND ultimately reminds us more about what makes us the same, rather than what makes us different. And while the characters may be facing specific challenges, we all identify with the larger, common themes of family struggles, uncontrollable crises, parenting, and unconditional love.

FALSETTOLAND is all about heart, compassion, understanding, support, and not just accepting our differences, but embracing them. Not only are those values the core of the show, they are the core of life itself - the commonality of our shared life experiences and what bonds us together as human beings. In the end, that’s all there is.

We hope that you enjoy MTC’s immersive telling of the *FALSETTOLAND* story, and that you will continue to talk and think about your experience here long after the curtain comes down.

Once again, thank you for your support and enjoy the show.

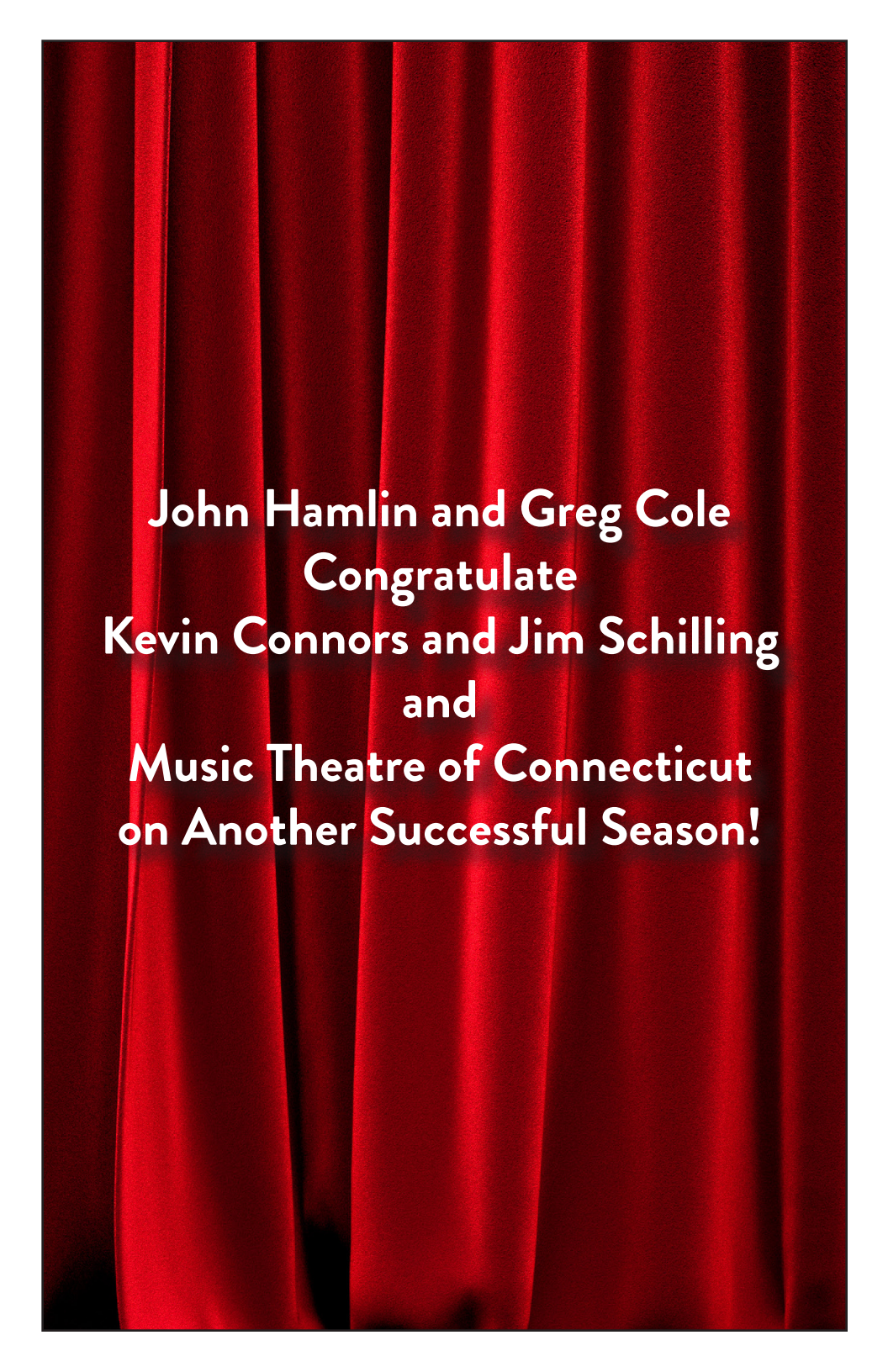
A stylized, handwritten signature in black ink, appearing to read 'K Connors'. The signature is fluid and cursive, with a long horizontal stroke extending to the right.

KEVIN CONNORS
Director of *Falsettoland*
MTC Executive Artistic Director & Co-Founder



Greg Cole - Piano Tuner/Technician

I offer the exceptional to draw out the best
www.gregcolepianotuner.com

A background of deep red velvet curtains with vertical folds and a slight sheen.

**John Hamlin and Greg Cole
Congratulate
Kevin Connors and Jim Schilling
and
Music Theatre of Connecticut
on Another Successful Season!**



Feel confident and secure about your financial future.

Let's work together to identify and document your financial goals and unique needs. Along the way, we'll meet to review your progress and update your goals to make sure you're on track. We are committed to helping you feel confident, connected and in control of your financial life.

Call us today to get started.



Bunting and Somma

A private wealth advisory practice of
Ameriprise Financial Services, Inc.

2425 Post Road
Southport, CT 06890

203.222.4994 Ext. 1

BuntingAndSomma.com



Congratulations
to Kevin Connors
and Jim Schilling.

You have impacted
the lives of so many
and culturally enriched
even more!



WE ARE PROUD TO BE A SPONSOR OF MTC AND SUPPORT
A NEW SEASON OF LOCAL PERFORMING ARTS



**SIP
NOSH
ENGAGE**



Social Hour | Live Music | Open Mic
Drag Bingo Brunch | Global Food Series
Gluten-Free Restaurant (but don't let that fool ya!)

be social @blackrocksocialhouse.com
2895 Fairfield Ave, Bridgeport, CT (203) 549-8333

November 5-21, 2021

MUSIC THEATRE OF CONNECTICUT
MTC MAINSTAGE

presents

FALSETTOLAND

Book by WILLIAM FINN and JAMES LAPINE
Music and Lyrics by WILLIAM FINN

with

CORINNE C. BROADBENT*
ELISSA DEMARIA*
JEFF GURNER*
MAX MEYERS*
JESSIE JANET RICHARDS*
ARI SKLAR
DAN SKLAR*

Scenic Design by LINDSAY FUORI
Lighting Design by RJ ROMEO
Costume Design by DIANE VANDERKROEF
Sound Design by WILL ATKIN
Prop Design by SEAN SANFORD
Stage Managed by JIM SCHILLING*
Choreography by CHRIS McNIFF
Musical Direction by DAVID JOHN MADORE
Directed by KEVIN CONNORS

* Members of Actors' Equity Association, the union of professional actors and stage managers in the United States.

The videotaping, photography, or making of electronic or other audio and/or visual recordings of this production is a violation of United States copyright laws and an actionable federal offense.

Falsettoland is presented by arrangement with ConcordTheatricals.com

The 2021/2022 MTC MainStage Season is generously sponsored in part by



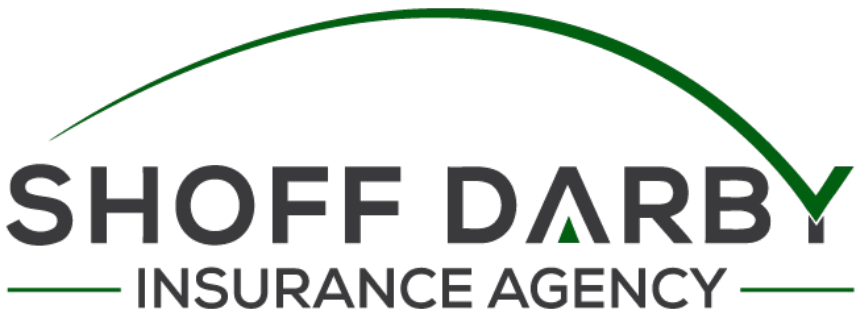
THE
BURRY FREDRIK
FOUNDATION



MTC is generously supported in part by



Congratulations
on another successful
season!



488 Main Avenue, 3rd Floor
Norwalk, CT 06851
203-354-6480

www.shoffdarby.com

THE "FALSETTOLAND" COMPANY



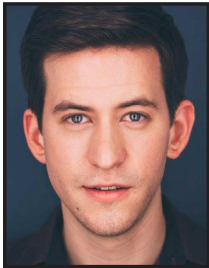
CORINNE C.
BROADBENT



ELISSA
DeMARIA



JEFF
GURNER



MAX
MEYERS



JESSIE JANET
RICHARDS



ARI
SKLAR



DAN
SKLAR



SAUGATUCK
COMMERCIAL
REAL ESTATE LLC

LICENSED IN CT, NY, MA, RI, NH, FL

9 Burr Road
Westport, CT 06880
203.222.4190

www.saugatuckcommercial.com

Proud members of ICSC, NEFA, REFA, WBENC



FULL-SERVICE COMMERCIAL REAL ESTATE BROKERAGE

SCRE IS PLEASED TO CONTINUE ITS SUPPORT OF MTC



**Here's to Another Terrific Season of
Top-Notch Performances!**



Robert J. Sciglimpaglia, Jr.



Attorney at Law

Certified Worker's Compensation Specialist

Personal Injury Law

Real Estate/Foreclosure

Entertainment/Trademark/Copyright Law

Admitted in Connecticut and New York

Practicing since 1991

Named SUPERLAWER™ from 2009-2021

**Named TOP 100 Trial Lawyer by
National Trial Lawyers Association**

10.0 Superb Rating on AVVO

**Author of Amazon Best Selling Book:
*"Voice Over Legal"***

101 Merritt 7
Suite 300
Norwalk, CT 06851 *
203-663-2803

**robscig@usa.net
robscigesq.com**

*Additional offices located in Stamford, Danbury and New York City

CAST

(on order of appearance)

Mendel JEFF GURNER
Marvin DAN SKLAR
Jason ARI SKLAR
Trina CORINNE C. BROADBENT
Dr. Charlotte JESSIE JANET RICHARDS
Cordelia ELISSA DeMARIA
Whizzer MAX MEYERS

TIME

1981

PLACE

New York City

FALSETTOLAND

WILL BE PERFORMED WITH A FIFTEEN-MINUTE INTERMISSION

MUSICIANS

Piano/Musical Director DAVID JOHN MADORE

Drums STEVE MUSITANO/CHRIS McWILLIAMS

“All the world’s a stage...”

William Shakespeare, *As You Like It*

And you’ve done it brilliantly!

Wishing everyone at
Music Theatre of Connecticut
a wonderful season!

The McAree Family



GREEK & ITALIAN CUISINE

www.jordansrestaurants.com

FREE DELIVERY & TAKE OUT
252 Flax Hill Road,
Norwalk, CT 06854
(203) 852-0003

DINE IN & TAKE OUT
369 Westport Avenue,
Norwalk, CT 06851
(203) 846-9557

MUSICAL NUMBERS

ACT ONE

“Falsettoland”	Everybody
“About Time”	Marvin
“Year of the Child”	Dr. Charlotte, Cordelia, Marvin, Trina, Mendel & Jason
“Miracle of Judaism”	Jason
“The Baseball Game”	Everybody
“A Day in Falsetoland”	Everybody
“The Fight”	Jason, Trina, Mendel & Marvin
“Everyone Hates His Parents”	Mendel & Jason
“What More Can I Say”	Marvin
“Something Bad is Happening”	Dr. Charlotte & Cordelia
“More Racquetball”	Marvin & Whizzer

FIFTEEN-MINUTE INTERMISSION

ACT TWO

“Holding to the Ground”	Trina
“Days Like This”	Marvin, Whizzer, Cordelia, Trina, Mendel, Jason & Dr. Charlotte
“Cancelling the Bar Mitzvah”	Trina, Mendel & Jason
“Unlikely Lovers”	Marvin, Whizzer, Cordelia & Dr. Charlotte
“Another Miracle of Judaism”	Jason
“Something Bad is Happening” (Reprise)	Dr. Charlotte
“You Gotta Die Sometime”	Whizzer
“Jason’s Bar Mitzvah”	Jason, Whizzer, Marvin, Trina, Mendel, Cordelia & Dr. Charlotte
“What Would I Do?”	Marvin & Whizzer

Gold's DELICATESSEN

421 Post Road East, Westport
(203) 227-0101

Dine In • Take Out • Custom Catering



savers[™]
SHOP. REUSE. REIMAGINE.

A big heart and an even bigger vision.
We're an impressive thrift store,
a community champion and
a revolutionary recycler.
And we've been at it for more than 60 years!

99 Federal Road
Brookfield, CT 06804
(203) 775-5910
stores.savers.com/ct/brookfield

WHO'S WHO

CORINNE C. BROADBENT (*Trina*) was last seen at MTC performing in *Evita*. Favorite credits include: Narrator in *Joseph...Dreamcoat* (CT Critics Nomination), Guenevere (u/s) in *Camelot*, Zaneeta in *The Music Man*, Sister Amnesia in *Nunsense* and her solo cabaret show entitled *Let it Sing*. Thanks to Allan, Phaedra, Grayson, Kevin and Jim!

ELISSA DeMARIA (*Cordelia*) is delighted to return to the MTC stage and share this important story. Select credits include: *Jekyll & Hyde* (Lucy), *Little Shop of Horrors* (Audrey - CCC nomination), *Next to Normal* (Natalie), *Marvelous Wonderettes* (Swing), *Kiss Me Kate* (Lois/Bianca). Elissa is a teacher at MTC and a proud Point Park University alum. Now and always, for Louise. @eee.lissa

JEFF GURNER (*Mendel*) has appeared at MTC in *Tru*, *Ragtime*, *Jekyll & Hyde*, *Cat on a Hot Tin Roof* and *It's a Wonderful Life*. Broadway: *The Lion King*. Off-Broadway/NY: *Five Course Love*. TV: FBI, *Homeland*, *The Good Wife*. Jeff has recorded hundreds of voice-overs for television and radio commercials, video games and animated series, and he is an award-winning audiobook narrator.

MAX MEYERS (*Whizzer*) (he/they) Select Credits: *Bright Star*, *Fun Home*, *The Last Five Years*, *The Flamingo Kid*, *Lolita*, *HAIR*. Narrator of NYT Bestselling Author Karen M. McManus latest novel, *You'll Be the Death of Me*. Max runs Homeschool Acting Studio. They have a particular passion for preparing young actors for college auditions! Learn more at homeschoolacting.com and @heyitsmaxmeyers @homeschoolacting. Proud alum of NYU Tisch.

JESSIE JANET RICHARDS (*Dr. Charlotte*) is thrilled to be making her MTC debut and returning to live theater! Favorite roles include; Factory Girl/ Fantine understudy

in *Les Miserables* (Broadway), Patsy in *Always, Patsy Cline*, Mrs. Walker in *The Who's Tommy*, and Connie Francis and Janis Joplin in *Beehive*. Jessie lives in Norwalk.

ARI SKLAR (*Jason*) is making his MTC debut with Falsettoland. He is a 7th grader at Westport's Coleytown Middle School. Credits include *Merrily We Roll Along* (Young Frank-Staples HS), *A Christmas Story* (Randy-Curtain Call) and Netflix's upcoming *13* (backup vocals). Thanks and love to Isaac, Jonah, mom and Marvin.

DAN SKLAR (*Marvin*) is thrilled to be making his MTC debut with his son. Credits (before synagogue life) include the Broadway tour of *Beauty and the Beast* (Lefou) and rabbinic consultant for the film *A Serious Man*. He lives in Westport with his wife Rabbi/Cantor Shirah Sklar and their sons Ari, Isaac and Jonah.

WILLIAM FINN (*Book, Music & Lyrics*) is the writer and composer of *Falsettos*, for which he received two Tony Awards, Best Book of a Musical (with James Lapine) and Best Original Score. He has also written and composed *In Trousers*, *March of the Falsettos* and *Falsettoland* (Outer Critics Circle Award for Best Musical, two Los Angeles Drama Critics Awards, two Drama Desk Awards, the Lucille Lortel Award and Guggenheim Fellowship in Playwriting). Mr. Finn wrote the lyrics to Graciela Daniele's *Tango Apasionado* (music by the great Astor Piazzolla) and, with Michael Starobin, the music to Lapine's version of *The Winter's Tale*. His musical *Romance in Hard Times* was presented at The Public Theater. Recently, he wrote *Painting You for Love's Fire*, a piece commissioned and performed by the Acting Company, based on Shakespeare's sonnets. For television, Mr. Finn provided the music and lyrics for the Ace Award-winning HBO cartoon *Ira Sleeps Over*, *Tom*



CERTIFIED CONTRACTOR

For 22 years running builders have used Andersen® windows more than any other brand.*

400 SERIES

TIME TESTED, CLASSIC WOOD CRAFTSMANSHIP

Providing a classic blend of engineering and craftsmanship. Customizable and low maintenance, it's no surprise that millions of homeowners have chosen 400 Series Windows.



INTERSTATE + LAKELAND LUMBER

For the Builder who Cares

184 S. Water Street • Greenwich CT 06830 • (203) 531-8050

*Hanley Wood Builder Brand Use Study 1998 - 2000, Windows - Wood & Clad - Wood Category
*Andersen® and all other marks where denoted are trademarks of Andersen Corporation. ©Andersen Corporation. All rights reserved.

WHO'S WHO

Thumb and *Thumbelina*, *Pokey Little Puppy's First Christmas* and, with Ellen Fitzhugh, two *Brave Little Toaster* cartoons. Mr. Finn has written for *Vogue*, *Harper's Bazaar* and *The New Yorker*. A graduate of Williams College, where he was awarded the Hutchinson Fellowship for Musical Composition, Finn now teaches a weekly master class at the NYU Tisch Graduate Program in Musical Theatre Writing. His most recent projects include *Elegies, A Song Cycle* (Lincoln Center), *The 25th Annual Putnam County Spelling Bee* which had a three-year run on Broadway and has been produced nationally and all over the world, and *Little Miss Sunshine* with James Lapine. For the past four years he has been the Artistic Head of the Musical Theatre Lab at the Barrington Stage Company in Pittsfield, Massachusetts.

JAMES LAPINE (*Book*) has written and directed the plays *Table Settings*, *Luck*, *Pluck and Virtue*, *The Moment When*, *Fran's Bed* and *Mrs. Miller Does Her Thing*. He has written the book for and directed Stephen Sondheim's *Sunday in the Park with George*, *Into the Woods*, *Passion* and the multi-media revue *Sondheim on Sondheim*. He also directed *Merrily We Roll Along* as part of *Encores!* at New York City Center. With William Finn he has collaborated on *March of the Falsettos* and *Falsettoland*, later presented on Broadway as *Falsettos*, *A New Brain*, *Muscle* and *Little Miss Sunshine* at 2nd Stage Theatre. On Broadway he has also directed David Henry Hwang's *Golden Child*, *The Diary of Anne Frank*, Michel Legrand's *Amour*, and *The 25th Annual Putnam County Spelling Bee*. He directed Jenny Allen's solo piece *I Got Sick and Then I Got Better* with Darren Katz. Lapine directed the 2012 Broadway revival of *Annie*. He is co-produced and directed the HBO documentary *Six By Sondheim*. Lincoln Center Theater produced his stage adaptation of the Moss Hart

memoir, *Act One*. Lapine has also directed several productions off-Broadway as well as three films. He is the recipient of three Tony Awards, five Drama Desk Awards and the Pulitzer Prize. In 2011, he was inducted into the Theater Hall of Fame. Lapine is a member of the Dramatist Guild Council and for the last twelve years has been a mentor for TDF's Open Doors Program. He is also on the board of *Ars Nova Theatre*.

KEVIN CONNORS (*Director / Executive Artistic Director & Co-Founder*) Off-Broadway: *Play Like a Winner* (NYMF award-winner), *Prime Time Prophet*, *Jukebox Saturday Night*, *The Abandoned Loves of Frederick R.*, *Life Anonymous*, *Lover: The Valentino Musical*, *Babes Off Broadway*, *Saloon* and *Suzy Q*. Selected regional productions: *The Fantasticks*, *It's a Wonderful Life: A Live Radio Play*, *A Christmas Carol* and *Baby*; with such stars as Joan Rivers, James Naughton, and Johnny Mathis. He has directed over 100 MTC Equity MainStage productions including *Next to Normal*, *Cabaret*, *Little Shop of Horrors*, *Evita*, *Doubt*, *Master Class*, *Gypsy*, (all Connecticut Critics' Circle Award Nominations/Winners), and *It's a Wonderful Life: A Live Radio Play*, (Moss Hart Award Winner). BroadwayWorld Award Winner as Best Director for MTC's *Cat on a Hot Tin Roof*, Connecticut Critics' Circle Best Director winner for MTC's *Ragtime*, and recipient of the Tom Killen Award for Outstanding Contribution to Connecticut Professional Theatre. As a composer he has penned the score for numerous musicals including *It's a Wonderful Life: A Live Radio Play* and *A Christmas Carol: A Live Radio Play* (both published by Playscripts, Inc.), and served on the faculties of The Hartt School of Music/University of Hartford, Sacred Heart University, the University of Bridgeport and Musical Theatre Works in NYC. www.kevin-connors.com



TRANSPARENCY. PARTNERSHIP. ALIGNMENT.

GREG BAEKEY AND MATTHEW WUNDER ARE PROUD TO SUPPORT
MUSIC THEATRE OF CONNECTICUT FOR THE PAST 8 YEARS!

Most financial companies want you to invest in them. We'd rather invest in you.



Gregory D. Baekey,
CLU®, ChFC®
Principal
203.221.5205
wunderfinancial.nm.com



Matthew S Wunder,
CLU®, CFP®
Founder and CEO
203.659.4010
wunderfinancial.nm.com

WHO'S WHO

WILL ATKIN (*Sound Designer & Technician*) is very excited to begin his third Season with MTC, previously running sound for *Jekyll & Hyde, Always... Patsy Cline, Cabaret*, and *Ragtime* to name a few. He has stage managed *A View from the Bridge* (Westport Community Theatre), played Riff in *West Side Story* (Wilton Playshop). Will has a degree in Audio & Music Production, with a focus in jazz trombone from Western Connecticut State University.

LINDSAY FUORI (*Scenic Designer*) is a scenic designer for theatre, opera, and events. Lindsay returns to MTC this season having designed *Becoming Dr. Ruth* and *Tru* last season. Other recent regional credits include *Parade* (Moonbox Productions), *Native Gardens* (Gloucester Stage), and *The Crucible* (The Nora Theatre/Bedlam). Lindsay serves as an Industry Panelist for MassOpera's New Opera Workshop. She holds a B.F.A. in Scenic Design from Boston University. lindsayfuori.com.

DAVID JOHN MADORE (*Music Director/Conductor/Piano*) recently music directed and played *Siren's Den* at The Cutting Room, having previously music directed and conducted the workshop of *Moms: the Musical* (live and online). Other credits: *Les Miserables; Seussical* (Broadway); *The Fantasticks; Newsical the Musical, Cross That River; Prison Dancer; Peace Love and Cupcakes; Flight School* (Off-Broadway); Daniel Tiger's *Neighborhood Live!*; *Man of La Mancha* (National Tour); *Sunday In the Park With George; A Chorus Line; Joseph and the Amazing Technicolor Dreamcoat* (Arvada Center); *Mamma Mia* (Ivoryton); *The World Goes Round* (Music Theatre of Connecticut); *South Pacific, The Who's Tommy; Les Miserables; Happy Days*; (West Virginia Public Theatre); *Dear World; Red, Hot & Blue; On the Twentieth Century* (Goodspeed); *Sweet Charity; The Game* (Barrington Stage); *Man of La Mancha; The*

Sound of Music; Smokey Joe's Cafe (Sacramento Music Circus); *Fun Home; Violet* (Spotlight Theatre Co.) www.madoremusic.com

CHRIS McNIFF (*Choreographer*) is excited to be back at MTC! At MTC, he has choreographed *Tenderly* and *Ragtime*, and appeared in *Gypsy*. National Tours include *White Christmas* (4 years) and *Memphis*. Other favorite roles include Bert in *Mary Poppins* and Claude in *Hair*. Thanks to Kevin and Jim. Enjoy the show! www.chrismcniff.com

RJ ROMEO (*Director of Production / Lighting Designer*) has relocated from Pittsburgh, PA to become the Technical Director/Associate Director of Production at Westport Country Playhouse. He returns to MTC for his second season as DP and third season as resident lighting designer. Past MTC credits include *Cabaret, Ragtime, Steel Magnolias, Sylvia, Fully Committed, RFK, Becoming Dr. Ruth, Tru* and *It's a Wonderful Life: A Live Radio Play*. In addition, RJ has designed lighting for countless regional productions such as *Guys and Dolls, Twelfth Night*, and most recently *Frozen Jr.*

SEAN SANFORD (*Prop Designer*) is a Prop Designer and Theater Artist based in NYC. Previously at MTC Sean was the Props Supervisor and Scenic Charge for *Tru*. Other credits include Assistant Prop Supervisor at Westport Country Playhouse, New York Theater Workshop, and the Classical Theater of Harlem, he is also on the Props team at *Blue Man Group*, NYC. Sean is thrilled to be back making Theater with MTC. To see more of his work go to seansanforddesign.com

JIM SCHILLING (*Stage Manager/ Managing Director, Co-Founder*) co-founded Music Theatre of CT in 1987 and is currently MTC's Managing Director and Director of the School of Performing Arts. MTC



AES is excited & proud
to be a sponsor of MTC!



溢香軒



Tel: (203) 849-8788
(203) 849-8288

22 Chestnut Hill Road, (Rte 53)
Norwalk, CT 06851

(Cranbury Shopping Center, Next to Gregory's Store)

Village Gourmet

THE AUTHENTIC CHINESE FOOD

Business Hours
Mon. - Thurs.: 11:00 am - 10:00 pm
Fri. - Sat.: 11:00 am - 11:00 pm
Sun.: 12:00 noon - 10:00 pm

online order @
www.chinesefoodnorwalk.com

WHO'S WHO

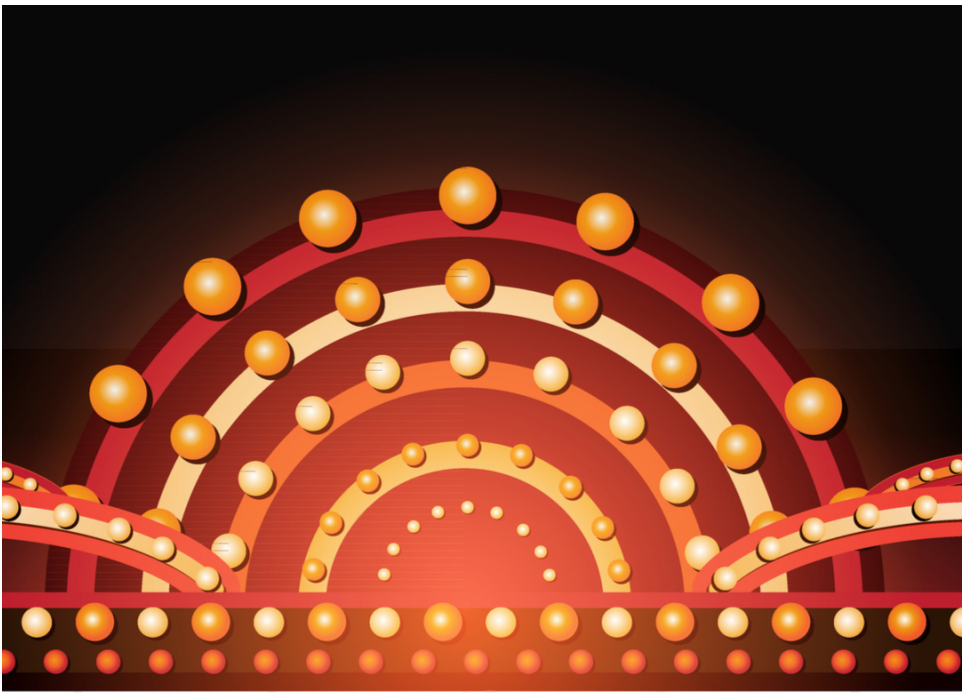
acting credits include *Jacques Brel is Alive and Well...*, *Three Guys Naked from the Waist Down*, *Yours*, *Anne*, *It's a Wonderful Life: A Live Radio Play*, *Doubt*, *Almost, Maine*, *God of Carnage*, *The Fantasticks*, *Vanya and Sonia and Masha and Spike*, *The 39 Steps*, *Cat on a Hot Tin Roof* and most recently, *Sylvia*. He was nominated for a CT Critics Circle award for Herr Shultz in *Cabaret* and winner of the BroadwayWorld award for *Cat on a Hot Tin Roof*. He continues as a Blue Ribbon Panelist for the Daytime Emmy Awards, and is on the voting committee for the SAG awards, and a member of "Who's Who in the American Theatre" from 1991-present. Jim was also an adjunct professor at Sacred Heart University (Advanced Acting, Advanced Scene Study, Script Analysis and Directing) where he was recently nominated Best Director of a musical for his work on *Godspell*.

DIANE VANDERKROEF (*Costume Design*)

has been the resident costume designer for MTC MainStage and MTC School of Performing Arts since 2006. In the past she also worked with Kevin Connors on *Babes in Toyland* at the Stamford Center for the Arts. She did designs for the Connecticut Grand Opera, including *Elixir of Love*, *Don Giovanni* and *Don Pasquale*. She has also been designer for Downtown Cabaret Theatre's MainStage and Children's Company, as well as various musicals for New England Lyrical Operetta. When not designing, Diane is a flight attendant for Delta Airlines.

ACTOR'S EQUITY ASSOCIATION (AEA)

was founded in 1913, AEA represents more than 50,000 actors and stage managers in the United States. Equity seeks to advance, promote and foster the art of live theatre as an essential component of our society. Equity negotiates wages and working conditions, providing a wide range of benefits, including health and pension plans. AEA is a member of the AFL-CIO, and is affiliated with FIA, an international organization of performing arts unions. The Equity emblem is our mark of excellence. www.actorsequity.org



**Congratulations
To MTC on Season
#35!**

**Paulette Oliva ~ Peter McClung
Proud MTC Board Members**

WHO'S WHO

MUSIC THEATRE OF CONNECTICUT

Executive Artistic Director	KEVIN CONNORS
Managing Director	JIM SCHILLING
Director of Production	RJ ROMEO
Box Office Manager & Administrative Assistant	ALEX MONGILLO
Marketing & PR Consultant	JOE LANDRY
Cabaret Liason	RAISSA KATONA BENNETT
Resident Scenic Designer	LINDSAY FUORI
Resident Costume Designer	DIANE VANDERKROEF
Resident Lighting Designer	RJ ROMEO
Resident Sound Designer	WILL ATKIN
Assistant Stage Manager	KEVIN CONNORS
Stage Technician	MARGOT WEISS
Front of House Staff	STEVE AUTORE, ELLEN BELOK, NANCY SCIGLIMPAGLIA, STACY MILLER
MTC School Faculty	KEVIN CONNORS, ELISSA DeMARIA, DEBORAH LEVY, TRACEY MARBLE, ALEX MONGILLO, KATIE ROMEO, JIM SCHILLING, ERIN WILLIAMS
Board of Directors	DAN ARON, GREG COLE, KEVIN CONNORS, MARK CORPRON, WENDY GERBIER, JOHN HAMLIN, BARBARA MCAREE, PETER MCCLUNG, PAULETTE OLIVA, MARISA PARROTTA, BILL PIERZ, HENRY C. RAPP III, JIM SCHILLING, GREG SWEENEY

SPECIAL THANKS

Maureen & Dan Aron,
Greg Cole,
Senator Bob Duff,
Mayor Harry Rilling,
Westport Country Playhouse,
Lou Ursone and Curtain Call



COASTAL BRIDGE
ADVISORS

Family. Wealth. Lifestyle. Retirement.
Decisions. Decisions.
Uncomplicate It.

Coastal Bridge Advisors
is a proud supporter of
Musical Theatre of Connecticut
and salutes their mission to provide musical theatre
performance and training to our community.

www.coastalbridgeadvisors.com

Phone: 203.683.1530 Toll Free: 800.700.5524

54 Wilton Road • Westport, CT 06880

2121 Avenue of the Stars • Suite 2300 • Los Angeles, CA 90067

38 Miller Avenue • Suite 20 • Mill Valley, CA 94941

Coastal Bridge Advisors is an Investment Advisor registered with the SEC.

MTC MAINSTAGE CHRONOLOGY

1987/88

Ebenezer!
Something's Afoot
First Act Texas,
Second Act New York
Jukebox Saturday Night

1988/89

Some Enchanted Evening

1989/90

The Fantasticks
Great American Backstage Musical
The Roar of the Greasepaint...

1990/91

Jacques Brel is Alive and Well...
Cole

1991/92

Three Guys Naked
from the Waist Down
Rodgers and Hart
Yours, Anne
Cole
I Do, I Do

1992/93

The Gifts of the Magi
Side By Side By Sondheim
Prime Time Prophet

1994/95

Lover: The Valentino Musical

1996/97

A Little Night Music
Nite Club Confidential
Fritz and Froyim
Straw Hat

1997/98

Yours, Anne

1998/99

As Long as There's Music

1999/00

Love is On the Next Train

2000/01

Baby

2001/02

Swingcopation

2003/04 and 2004/05

Babes in Toyland

2007/08

It's A Wonderful Life:
A Live Radio Play
Edges: A Song Cycle
The Last Five Years

2008/09

john & jen
Mothers and Sons
Lady Day at Emerson's
Bar & Grill

2009/10

The Story of My Life
Doubt
Pete 'n' Keely

2010/11

Klea Blackhurst's
"Everything the Traffic Will Allow:
The Songs & Sass of Ethel Merman"
Love Letters
My Way: A Musical Tribute
to Frank Sinatra

2011/12

Cabaret
Almost, Maine
I Left My Heart...

2012/13

Next to Normal
Ancestral Voices
Cole: The Cole Porter Musical

2013/14

Master Class
God of Carnage
The Fantasticks

2014/15

The World Goes 'Round
A Christmas Carol:
A Live Radio Play
Driving Miss Daisy
Little Shop of Horrors

2015/16

Evita
The Santaland Diaries
Vanya and Sonia
and Masha and Spike
The Last Five Years

2016/17

Gypsy
Sleuth
It's a Wonderful Life:
A Live Radio Play
I'll Eat You Last:
A Chat with Sue Mengers
End of the Rainbow

2017/18

The Bridges of Madison County
A Christmas Carol:
A Live Radio Play
Love Letters
The 39 Steps
Fun Home

2018/19

Jekyll & Hyde
Cat on a Hot Tin Roof
Always... Patsy Cline
Cabaret

2019/20

Ragtime: The Musical
Steel Magnolias
Sylvia

2020/21

Fully Committed
It's a Wonderful Life:
A Live Radio Play
Becoming Dr. Ruth
Tru

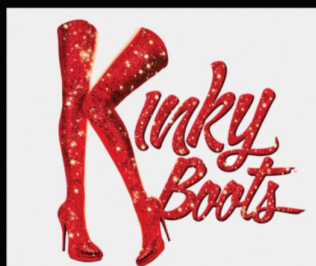
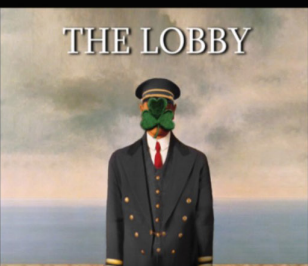
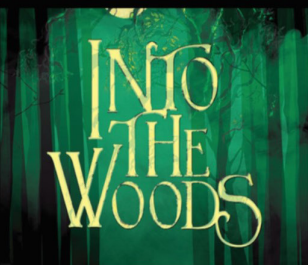
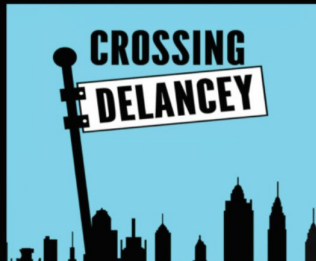
2021/22

Tenderly: The Rosemary
Clooney Musical
Falsettoland
Who's Holiday!
The Mountaintop
Buddy: The Buddy Holly Story

CURTAIN CALL'S 31st SEASON

STAMFORD'S LONGEST-RUNNING & ONLY YEAR ROUND NONPROFIT, PRODUCING THEATRE COMPANY!!!

SEPTEMBER 2021 - JUNE 2022



PLUS COMEDY NIGHTS, CONCERTS AND CABARETS, MURDER MYSTERIES, AND MORE

*In cooperation with the City of Stamford
Sponsored in part by the CT Office of the Arts*

203-461-6358

MUSIC THEATRE OF CONNECTICUT

MTC MAINSTAGE



“All of my most impactful moments of creativity and artistry as a young person were founded at MTC. Through the classes I took, to the shows I was in. I wouldn’t be able to do anything I do now if it weren’t for MTC.”

JUSTIN PAUL
MTC Alumni
Academy Award winner
Golden Globe winner

An Invitation to Get in on the Act!

For thirty-five years, Music Theatre of Connecticut has been bringing theatre to Fairfield County. Music Theatre of Connecticut is a 501(c)3 non-profit arts organization and is governed by a volunteer board of directors and, in addition, relies on a strong group of community volunteers who serve on a variety of production and fundraising committees. Please join us and become a part of the Music Theatre of Connecticut family.

Become an MTC Member today!
Visit www.musictheatreofct.com



**Proudly serving the
primary care needs
of long-term
survivors of HIV.**

**Primary Care
Sexual Health
HIV Treatment
LGBTQ Health
PrEP & PEP
Covid Vaccines**

**Visit us online at:
www.CircleCareCenter.org**



**618 West Avenue
Norwalk, CT 06850
203.852.9525**



We can't do it without you!

Music Theatre of Connecticut gratefully acknowledges the support of the following individuals, foundations and corporations.

FOUNDATION SUPPORT

General Atlantic Philanthropic Foundation
The Adolph and Ruth Schnurmacher Foundation
The Dunagan Foundation, Inc.
Fairfield County Community Foundation
The GE Foundation
Renaissance Charitable Foundation Inc.
The Robert W. Baird Foundation
TD Bank Charitable Foundation
The Burry Fredrik Foundation

CORPORATE SUPPORT

BTIG
Connecticut Department of Economic and Community Development
Eversource Energy
Hearst Media
The Hour
The IBM Corporation
Levin Capital Strategies
Melissa & Doug
Mizuho Investments
People's United Bank
RBC
Rizzuto's of Westport
Shoff-Darby Insurance
The Westport Inn

MTC gratefully acknowledges our Corporate and Foundation Sponsors

The State of Connecticut
Department of Economic and Community Development

Connecticut
still revolutionary

**People's United
Bank**

SHOFF DARBY
INSURANCE AGENCY

TD Bank

HEARST | **CONNECTICUT
MEDIA GROUP**

SOCIAL HOUSE
EST. 1911

2021/2022 MAINSTAGE SEASON MEMBERS

HERO

(\$10,000+)

ANGEL

(\$5,000 to \$9,999)

Dan Aron

John Hamlin & Greg Cole

Barbara McAree

EXECUTIVE

PRODUCER

(\$2,500 to \$4,999)

Paulette Oliva

& Peter McClung

Martin Resnick

PRODUCER

(\$1,000 - \$2,499)

DIRECTOR

(\$500 to \$999)

Amy Griffin

and Scott Behson

Dr. Garrett Bennett

David Garlock

Owen & Dorit Heimer

Paul Hunter

Lynne Huxsaw

Dean Kauffman

Mimi Roth

Anne & Gil Watkins

DESIGNER

(\$250 to \$499)

Durelle Alexander

Nancy Brown

Julie Chelminski

Karen Como

Andrea Light & Jack Cutler

Molly Alger and

Jay Dirnberger

Jerome H. Ewing

Mary Gladden

Jeanne Gnuse

Betty Kaye

Michele Markelon

Marisa Parrotta

Dr. Anthony Santomauro

Deborah Spinola

Nancy Usic

ACTOR

(\$100 to \$249)

Mr. & Mrs. Lee Battista

Adele Harrison Bernstein

Stephen Bistran

Sharon Poole and Mike

Bittenbender

John Boys

Charlotte Cooper

Carole & Joe Dell'Aquila

Drs. Marcia & William

Eckerd

Dianne Flagello

Sara Fliess

Dorothy Fox

Joanne Fuss

Elaine Ganat

Susan Garthwaite

Don and Maxine

Greenberg

Susan Haefner

Gigi Koleszar

Rita & Steve Lewis

Patricia Nave

George Nova

Penny Palmer

Jo Anne Parady

Joan Pendergast

Joanne Pica

Gina Ryan

Catherine M. Sullivan

Carri Vickrey

Wendy Vickrey

Joan and Marshall Weiss

CONTRIBUTORS BETWEEN 9/1/2020 AND 9/10/2021

(Includes Members from past MainStage Seasons)

Gail Abrams

Richard Adams

Randy Adams

Nancy Adler

Glenn Aigen

Louis Albanese

Durelle Alexander

Dylan Alfano

Molly Alger

David Allen

Lisa Allen

David Alpern

Harry Altman

Nikhil Aluru

Nicholas Amico

Rahul Amin

Mary Antonucci

Ronald Antonucci

Carolyn & Gavin Arneith

Dan Aron

Anna Aron

Alexa Aron

Ashley Aron

Michele Aymold

Susan Ball

Frank Bambace

Jennifer Bangser

Scott Barishaw

Elizabeth Barnes

Blair Barondes

Patrik Bauer

Joe Behson

Clair Benmosche

Garrett Bennett

Eloise Bennett

Lila Bepko

Andrew Berger

Adele Bernstein

Jean Bickley

CONTRIBUTORS BETWEEN 9/1/2020 AND 9/10/2021

(Includes Members from past MainStage Seasons)

Ethan Bindernagel	Emily Clark	Katie Emerson
Stephen Bistran	Brian Clevenger	Jerome H Ewing
Jared Blair	John & Kylie Closson	Lisa Fairchild
Beth Blatt	Jennifer Cochran	Kent Fairfield
Lynda Bluestein	Arthur & Claudia Cohen	Marcia Falk
Pistashia Bluestein	Gregory Cole	Ryan Farrington
Mike Bluestein	Erika Collins	Ilene Feldman
Sam Bluestein	Karen Como	Ben Finkelstein
Carter Bonecutter	Annastasia Confrey	Liz Fitzpatrick
Betsy Borns	Shea Connelly	Dianne Flagello
John Boys	Charlotte Cooper	Daniel Flaherty
Amy Brand	Brian Corcoran	Cherie A Flavin
Tami Bresnahan	Mark Corpron	Sara Fliess
Donald Brown	Michelle Corpron	Agnes Flynn
Nancy Brown	Kyle Coughlin	Alana Fodeman
Catherine Brown	Melissa Crouch Chang	Marcus Forman
Michelle Bruckner	Nicholas Cruz	Jody Formica
Tracey Bruner	Wendy Cudmore	Dorothy Fox
Kimberly Bryant-Smith	Jim Cunningham	Sharon Franke
Jodi Bryce	Joan Curran	Wallace Frey
Peggy Bud	Jack Cutler	Daniel Friedman
Matthew Bud	Robert Cygan	Benjamin Frimmer
Carly Buecker	Zipora Cysner	Jean Fullen
Cameron Buell	Vincent D'Agostino	Joanne Fuss
James Burch	David Damato	Arlene Galchinsky
Vita Burdi	Rocky Daniels	Elaine Ganat
Suzanne Burkhardt	Stephen Davis	Mary Gantt
Nanette Buziak	Everdina De Koning	Rita Gantt
Alyson Cahill	Patrick Decker	David Garlock
Kevin Cai	Aaron Dehaan	susan garthwaite
Aiden Cardozo	Merrie Deitch	Linda Giers
Nick Cardozo	Carole Dell'aquila	Lisa Girden-Barkan
Robert Carnahan	Susie Denardo	Mary Gladden
Dennis Carroll	Janet & Tim Densky	Jeanne Gnuse
Susan Carter	Natacha Dervisevic	Jordan Goldberg
Martha Castillo	Michele Discala	Mike Goldstein
Lisa Castillo	Diane Donovan	Leslie Goldstone Orly
Octavia Catana	Liam Dorsey	Katherine Golomb
Ina Chadwick	Grace Dressel	Wendi Goodlett
Angela Chambosse	Timothy J. Dugan	Baileigh Goodlett
Julie & Paul Chelminski	Evan Dunnell	Jean Goodnow
Ron Chielli	Thomas Durkin	Andrea Gores
Joshua Christensen	Marcia and William Eckerd	Jakub Gorzko
Sharon Clark	Jeanne Egut	Harriet Gotz

CONTRIBUTORS BETWEEN 9/1/2020 AND 9/10/2021

(Includes Members from past MainStage Seasons)

Peter Gould	David Isaac	Mark Lesnik
Burton Grad	Karen Isaacs	Jill Lesnik
Nicole Grashow	Kris Jandora	Beth S Levine
Christine Greco	Robert Jennings	Alisyn Camerota and Tim Lewis
Maxine Greenberg	Jonathan Jodka	Charles Lewis
Stewart Greenfield	Denise Johnson	Andrea Light
Jerrold Gregory	Paula Johnson	Lauren Linger
Amy Griffin	Justin Johnson	Ann Lloyd
Dorothy Grimm	Nanette Jordan	Rosemary Loar
Cristin Grogan	Jacob Kane	Molly Luciano
Caitlin Grogan	Allison Kane	Kathryn Luckstone
Francisco Guerra	Anne Kanengeiser	Mitzi Lyman
Jeff Gurner	Jeri Kansas	Nick MacIver
Shray Gurtata	Joanne Kant	Brandon Mack
Stephen Guss	Margot Karbel	Shirlee Maddren
Carol Guss	Raissa Katona Bennett	Sachin Majumdar
Susan Haggstrom	Dean Kauffman	Phyllis & Ken Makovsky
Maureen Hamill	Randye Kaye	Mary Makowka
John Hamlin	Siddharth Kaza	Stephanie Makowka
Amy R Hamlin	Jen Kearney	O'Shea
Ethan Hanabury	Margaret Kelley	Danielle Mantich
Emilie Hannon	Michele Kenaga	Pamela Marcus
Brenton Hard	Bijumon Kizhakkekuttu	Anthony Marino
Susan Hebbel	Kyle Knezovich	Joel Martin
Dorit Heimer	Elizabeth Knezovich	Lauren Mass
Angelica Hernandez	Joseph Knipp	Cindy Mathieson
David Heuvelman	Betty Kogen	David & Ann Matlow
Jennifer Heyen	Joanne Koleszar	Anna Mcafee
Pamela Hill	Gigi Kolezar	Jim & Barbara Mcaree
Mar Ho	Kevin Kology	James F. McAree
Judith Hochstadt	Edon Kosova	Catherine M. McAree
Margaret Holton	Thomas Kulhawik	Maura J Mcaward
Ann Holtz	Joshua Kuller	Troy Mcchesney
Ben Holtzlander	Victoria Lagana	Paulette Oliva & Peter
David Holzemer	Jonathan Lakeland	Mcclung
Rebecca Hoodwin	Boaz Lalo	Ally McCoy
William Hoop	Michael Landolfi	Evan McDonnell
Terri Hoops	Joe Landry	Glenn Mcgarvey
Cheryl Hornbaker	Amy Lang	John McGovern
Linda Hudson	Gregory Lang	Barbara Mchugh
Ann Hughes	Eliza Lang	Carolyn McPharlin
Paul Hunter	Cassie Lang	aahan mehra
Lori & Bob Hutchinson	Gayle Lawrence	Bryan Melvin
Lynne Huxsaw	Jane Lerner	

CONTRIBUTORS BETWEEN 9/1/2020 AND 9/10/2021

(Includes Members from past MainStage Seasons)

John Messmore	Dawn Olson	Joel Reynolds
John & Susan Miller	Mark Overley	Rita Richardson
Sharon Miller	Stephen Pagliaro	Carolyn Rincon
Ryan Miller	Penny Palmer	Stephanie Rival
Barbara Mitchell	Yash Pande	William Rizzuto
Steve Mitchell	Jo Anne Parady	Debra Robic
Robert Mobley	Wendye Pardue	Louis Rosenfeld
Arvind Mohan	Jessica Paroly	Robert & Judith
Mary Beth Mollica	Mary Parrotta	Rosenkranz
Diane Mongiardo	Nicholas Parrotta	Jeffrey Rosier
Alex Mongillo	Marisa Parrotta	Miriam Roth
Emily Mooney	Jack Parrotta	Thomas Rouffiac
Jeffrey Moss	Morgaine Pauker	John Russitano
Marjorie Moss	Bruce Peabody	Gina Ryan
Kiley Moss	Lynne Penczer	Monica Ryan
Camryn Moss	Joan Pendergast	Catherine Ryan
Jeffrey Mossler	Roger Perez	Pamela Rybarczyk
Michael Mushak	Yesenia Perez	Sally Sacks
Bill Nabel	Sarah Pero	Cindy Sales
Lauren Nadler	Ellen Petrino	Ioannis Samoilis
Marianne Nadriczny	Joey Petrolina	Annette Sandt
Patricia Nave	Ruth Phillips	Anthony Santomauro
Nick Nelson	Joanne Pica	Carolyn Savoia
Lynnette Neupauer	Bill Pierz	John Schilling
Timothy Newton	Christine Place	Emily Schlotman
Pete Newton	Alena Poirier	Lorna Schreck
Thomas Newton	Ann Pollack	Susan Schulz
Kenneth Ng	Sharon Poole	Robert Sciglimpaglia
Helen Ni	Tom Prather	Jenny Sciglimpaglia
Doron Nissan	Steve Pratt	Katie Sequin
Emilia Nissan	John Pratt	David Shaeffer
Dana Nissan	Amy Pressman	Linda Shaffer
Judith Nissan	Adam Prichard	Jonathan Shapiro
Dillon Nissan	Mary Quinn-Devine	Ruth Ann Shay-johnson
Carter Norton	Martin Ragonese	Janet Shreiar
Payum Noshiravan	Rebecca Raiser	Kathryn Simmelkjaer
George Nova	Scott Raneri	Lennie Singer
Zoe Nunez	Judith Raphael	Diane Sirota
Cheryl Oaks	Henry Rapp	Daniel Sirota
Kristen O'Connor	Henry Rapp Iii	Arts & Culture
Ann Odoy	Gregory Rayner	Finale Small Saff
Paulette Oliva	Andrew Reale	Nigel Smith
Brandon Olsberg	Marco Reggiardo	Gail Sollid
Haley Olson	Martin Resnick	Vivian Sorvall

CONTRIBUTORS BETWEEN 9/1/2020 AND 9/10/2021

(Includes Members from past MainStage Seasons)

Kirstina Spadone	Carolyn Turiano	Ally Wehn
Trudy Spiller	Ellen Turner	Richard Weidlich
William G Squier	Cynthia & Stan Twardy	Joan Weiss
Brian Stack	Amy Tyson	David Westmoreland
Jodi Stevens	Judith Udell	Angela Whitford
John Stid	Janet Ursone	Maria Wilcox
Gail Stone	Louis Ursone	Randy Williams
Rachel Strabley	Nancy Usic	Thomas Wilmott
WP Strouse	George Uzwiak	Elijah Winski
Yvonne Ann Stutler	Joseph Vallo	Tim Wirsch
Michael Sullivan	Emma Vallo	Kimberly Witty
Catherine M. Sullivan	Stacie Van Deusen	Ruby Woods
Chris Supernaw	Diane Vanderkroef	Joan Wright
Michele Sweeney	Brian Vasquez	Peter Wu
Andrew Szymanski	Wendy Vickrey	Elias Yarling
Yoriko Tanno-Kimmons	Srivi Vinjamurj	Arlene & Martin Yolles
Rohan Thomas	Jerusha Vogel	Ethan Yost
Barbara Thompson	Jack Waitley	Emily Young
Kim Titus	Betty Walker	Melissa Zambo
Susan Tom	Matthew Ward	Amber Zhao
Virginia Toms	Anne & Gil Watkins	Marie Zimmeele
Dennis Torres	Kenneth Weakley	Deion Ziwawo
Juergen Tossmann	A. Michael Weber	

An Invitation to Get in on the Act!

For thirty-five years, Music Theatre of Connecticut has been bringing theatre to Fairfield County. Music Theatre of Connecticut is a 501(c)3 non-profit arts organization and is governed by a volunteer board of directors and, in addition, relies on a strong group of community volunteers who serve on a variety of production and fundraising committees. Please join us and become a part of the Music Theatre of Connecticut family.

Become an MTC Member today!

Visit www.musictheatreofct.com