

MUSIC THEATRE OF CONNECTICUT

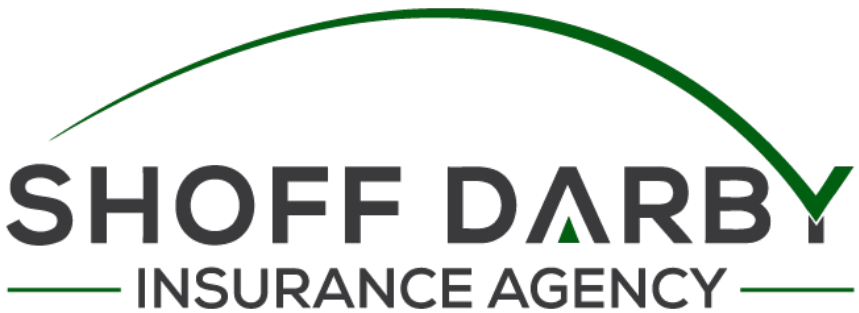
MTC MAINSTAGE

I HATE
HAMLET

A COMEDY
BY PAUL RUDNICK



Congratulations
on another successful
season!



488 Main Avenue, 3rd Floor
Norwalk, CT 06851
203-354-6480

www.shoffdarby.com



Greg Cole - Piano Tuner/Technician

I offer the exceptional to draw out the best
www.gregcolepianotuner.com





***MTC always serves up a GREAT season!
Paulette Oliva and Peter McClung***



COASTAL BRIDGE
ADVISORS

Family. Wealth. Lifestyle. Retirement.
Uncomplicate It.

Coastal Bridge Advisors
is a proud supporter of the
Music Theatre of Connecticut.

We salute their mission to provide
musical theatre performance and
training to our community.

coastalbridgeadvisors.com

54 Wilton Road, Westport, CT 06880
2121 Avenue of the Stars, Suite 2300, Los Angeles, CA 90067
203.683.1530 • 800.700.5524

Coastal Bridge Advisors is an Investment Advisor registered with the SEC.



Congratulations
to Kevin Connors
and Jim Schilling.

You have impacted
the lives of so many
and culturally enriched
even more!

February 3-19, 2023

MUSIC THEATRE OF CONNECTICUT
MTC MAINSTAGE

presents

**I HATE
HAMLET**

by PAUL RUDNICK

with

ROBERT ANTHONY JONES*

LILIANE KLEIN*

DAN O'DRISCOLL*

CONSTANTINE PAPPAS*

JO ANNE PARADY*

ELENA RAMOS PASCULLO*

Sound Design by WILL ATKIN

Costume Design by DIANE VANDERKROEF

Scenic & Props Design by SEAN SANFORD

Lighting Design by RJ ROMEO

Fight & Intimacy Choreography by DAN O'DRISCOLL

Stage Managed by ABBEY MURRAY

Directed by KEVIN CONNORS

* Members of Actors' Equity Association, the union of professional actors and stage managers in the United States.

I HATE HAMLET is presented by arrangement with Dramatists Play Service, Inc. www.dramatists.com

The 2022/2023 MTC MainStage Season is generously sponsored in part by



THE
BURY FREDRIK
FOUNDATION

The State of Connecticut
Department of Economic and
Community Development

Connecticut
still revolutionary

HEARST | CONNECTICUT
MEDIA GROUP

Ameriprise
Financial



Advice worth
talking about.™

Customized advice *that* *changes with your needs.*

Everyone has different financial goals and priorities, and they change and grow as you do. That's why it's important for us to get to know you and understand what you're working toward. Together, we can create a personalized financial plan that fits your needs today and helps you build the tomorrow you deserve.



Bunting & Somma

A private wealth advisory practice of Ameriprise Financial Services, LLC

203.222.4994, option 1

2425 Post Rd, Southport, CT 06890

www.buntingandsomma.com

Not FDIC or NCUA Insured | No Financial Institution Guarantee | May Lose Value

Investment advisory products and services are made available through Ameriprise Financial Services, LLC, a registered investment adviser.

Ameriprise Financial Services, LLC. Member FINRA and SIPC.

© 2022 Ameriprise Financial, Inc. All rights reserved.

THE "I HATE HAMLET" COMPANY



ROBERT
ANTHONY JONES



LILIANE
KLEIN



DAN
O'DRISCOLL



CONSTANTINE
PAPPAS



JO ANNE
PARADY



ELENA RAMOS
PASCULLO

CAST

(alphabetically by actor)

ROBERT ANTHONY JONES	<i>Gary</i>
LILIANE KLEIN	<i>Felicia</i>
DAN O'DRISCOLL	<i>John Barrymore</i>
CONSTANTINE PAPPAS	<i>Andrew</i>
JO ANNE PARADY	<i>Lillian</i>
ELENA RAMOS PASCULLO	<i>Deirdre</i>

SETTING:

TIME: Mid 1990s

PLACE: New York City

I HATE HAMLET will be performed with a 15-minute intermission

The videotaping, photography, or making of electronic or other audio and/or visual recordings of this production is a violation of United States copyright laws and an actionable federal offense.

Design with Inspiration

Visit our Greenwich Design Center to experience Fairfield and Westchester Counties' leading supplier of luxury architectural hardware



INTERSTATE + LAKELAND LUMBER

A Century of Excellence

760 Post Rd E, Westport, CT (203) 226-3321 interstatelumber.com

WHO'S WHO

ROBERT ANTHONY JONES (*Gary*) [He/Him/His] B'way/National Tours: *Finding Neverland*, (Mr. Cromer) - Lunt-Fontanne Theatre (Final Broadway Cast), *Phantom of the Opera*, (Reyer/u/s Firmin) - Really Useful Theatre Company, *101 Dalmatians Musical*, (Jinx Baddun) - Hulu Theatre at Madison Square Garden: Off-B'way/NYC: *Bunnicula* (Original Cast & Recording) - Daryl Roth Theatre, *The Prince and the Pauper* (Original Cast & Recording) - Lamb's Theatre. Film/TV: *Queen of Knives* (Upcoming - Fred), *Drew's Famous Magical Jukebox* (Children's Series - Drew). Regional: *Bang Bang!* - American Premiere (co-starring with Sean Astin) - Shadowland Stages, *Something Rotten* - Nostradamus - Pioneer Theatre Company, *La Cage Aux Folles* - Albin/Zaza-Virginia Musical Theatre. robertanthonyjones.com

LILIANE KLEIN (*Felicia*) [She/Her/Hers] Music Theatre of CT debut! Regional: SpeakEasy (MA), Central Square Theatre (MA), Commonwealth Shakespeare Co (MA), New Rep (MA), Wheelock (MA), Majestic (MA), Stoneham (MA), Long Wharf (CT), Ivoryton (CT), CT Free Shakespeare (CT), Aurora (CA). NYC: Lincoln Center, New York City Opera, Urban Stages, NYMF, Musicals Tonight!, La Mama E.T.C.. Tours: *Titanic*, *Scrooge*. Film: *Ghost Light*, *Super Troopers 2*, *Men in Black 3*, *The Thing With Feathers*. TV: HOT3 Israel mini series, *Ananda*, *Feud* (FX), *High Maintenance* (HBO), *The Holiday Fix-Up* (Lifetime). Training: Boston University SOT, David Gideon, Tom Todoroff. Proud member of AEA and SAG-AFTRA. It truly takes a village and I am so so grateful for mine. Thanks and love always to my amazing husband Matt and our entire wonderful family in body and spirit, my teachers, CFS, Friends, Fans, and YOU! www.lilianeklein.com #choosejoy #playthelove

DAN O'DRISCOLL (*John Barrymore/Fight & Intimacy Director*) On Broadway: Associate Fight Director for *American Buffalo*, *Hangmen* and *Pass Over*. Off-Broadway: Fight Director on Downstate for Playwrights Horizons and Des Moines for Theatre For A New Audience. For MTC: Fight/Intimacy Director for *Lend Me a Tenor* and *Sunset Boulevard*; Fight Director for *Sylvia*, *Ragtime*, *Cabaret*, *Jekyll & Hyde*, *End of the Rainbow* and *Sleuth*. "I've played kings, dukes and earls - but, never a prince (Hamlet) until now."

CONSTANTINE PAPPAS (*Andrew*) National Tour: *The Phantom of the Opera*. Off-Broadway: *Penelope* (York Theatre). Regional: *Kismet* (dir. Lonny Price, Granada Theatre), *A Christmas Carol* (DCPA, WPPAC), *First Date* (Seven Angels), *Into the Woods* (GVT), *Les Miserables* (Fox Theatre), *A Comedy of Tenors* (GVT). Opera: *Il barbiere di Siviglia* (Figaro), *La boheme* (Marcello), *The Secret of Luca* (Luca). www.constandpappas.com

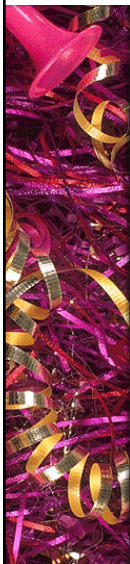
JO ANNE PARADY (*Lillian*) has been seen off-Broadway, in soaps & commercials, and multiple Shakespeare Festivals. She recently appeared at the Players Club and the National Arts Club NYC in *The Life of Shakespeare*; Zipper Theatre in *Momoirs: The Umbilical Cord Stops Here* which she co-wrote; Emilia in *Othello* at the Stratford Shakespeare Festival; and many performances with Theatre Artists Workshop. MTC credits include A. R. Gurney's *Ancestral Voices*, New Play Series readings and most recently *Lend Me a Tenor*. Great fun to be back at MTC with Kevin and Jim!

ELENA RAMOS PASCULLO (*Deirdre*) is thrilled to be returning to MTC after appearing in 2022's production of *The Buddy Holly Story*. Past favorites include *Little Women*, *Hedwig and the Angry Inch*, *In the Heights*, and *Gyps and Dolls*. A New York



HALLMARK MEDIA AND HALLMARK CHANNEL
CELEBRATE
MTC'S 36TH SEASON

Here's to MTC's Proud Past and Future Success



BERCHEM
MOSES^{PC}

Attorneys and Counselors at Law

Supporting the Arts in Our Communities



We believe that arts and culture create a vibrant landscape, enhancing the quality of life in Connecticut's towns and cities. Our firm has been serving the community for over 80 years. Now with more than 30 attorneys, our staff is actively involved in numerous local, civic and charitable initiatives statewide.

- Corporate/Business Law
- Litigation
- Labor & Employment
- Education Law
- Land Use & Zoning
- Real Estate
- Estate Planning/Probate
- Divorce & Family Law

www.berchemmoses.com

Milford

75 Broad Street, Milford, CT 06460
Phone: 203-783-1200

Westport

1221 Post Road East, Westport, CT 06880
Phone: 203-227-9545

WHO'S WHO

native, Elena is an actress, singer, ukulelist, and songwriter. Follow @elenalenabobena + www.elenaramospascullo.com.

KEVIN CONNORS (*Director / Executive Artistic Director & Co-Founder*) Numerous Off-Broadway productions including *Play Like a Winner* (NYMF award-winner), *Prime Time Prophet*, and *Jukebox Saturday Night*. Regional productions include *The Fantasticks*, *It's a Wonderful Life: A Live Radio Play*, and *A Christmas Carol*; with such stars as Joan Rivers, James Naughton, and Joanna Gleason. Directed over 150 MTC Equity MainStage productions including *Next to Normal*, *Lady Day...*, *Falsettoland*, *Ragtime*, *Cabaret*, *Little Shop of Horrors*, *Master Class*, *Gypsy* (all Connecticut Critics' Circle Award Noms/Winners), and *It's a Wonderful Life: A Live Radio Play*, (Moss Hart Award Winner). BroadwayWorld Award Best Director for *Cat on a Hot Tin Roof*, Multiple Connecticut Critics' Circle Best Director winner including *Ragtime* and *Falsettoland*, two-time recipient of the Tom Killen Award for Outstanding Contribution to Connecticut Professional Theatre. Composer of numerous musicals including *It's a Wonderful Life: A Live Radio Play*, *A Christmas Carol: A Live Radio Play* and *The Great Gatsby: A Live Radio Play* (all published by Playscripts, Inc.). Adjunct professor: The Hartt School of Music/University of Hartford, Sacred Heart University, the University of Bridgeport. www.kevin-connors.com

PAUL RUDNICK (*Playwright*) Paul Rudnick's plays have been produced on and off Broadway and around the world. They include *Valhalla*; *The Most Fabulous Story Ever Told*; *Mr. Charles*, *Currently of Palm Beach*; *Pride and Joy*; *The Naked Eye*; *I Hate Hamlet*, and *Jeffrey* for which he won an Obie, an Outer Critics Circle Award, and the John Gassner Playwriting Award. His novels are *Social Disease* and *I'll Take It*, both published by Knopf. His articles and essays have appeared

in *The New Yorker*, *Esquire*, *Vogue*, *Vanity Fair*, and *The New York Times*. He is rumored to be quite close to *Premiere* magazine's film critic, Libby Gelman-Waxner, whose collected columns have been published under the title *If You Ask Me*. His screenplays include *Addams Family Values*, the screen adaptation of *Jeffrey* and *In & Out*.

JIM SCHILLING (*Managing Director, Co-Founder*) co-founded Music Theatre of CT in 1987 and is currently MTC's Managing Director and Director of the School of Performing Arts. MTC acting credits include *Jacques Brel is Alive and Well...*, *Three Guys Naked from the Waist Down*, *Yours*, *Anne*, *It's a Wonderful Life: A Live Radio Play*, *Doubt*, *Almost, Maine*, *God of Carnage*, *The Fantasticks*, *Vanya and Sonia and Masha and Spike*, *The 39 Steps*, *Cat on a Hot Tin Roof* and most recently, *Sylvia*. He was nominated for a CT Critics Circle award for Herr Shultz in *Cabaret* and winner of the BroadwayWorld award for *Cat on a Hot Tin Roof*. He continues as a Blue Ribbon Panelist for the Daytime Emmy Awards, and is on the voting committee for the SAG awards, and a member of "Who's Who in the American Theatre" from 1991-present. Jim was also an adjunct professor at Sacred Heart University (Advanced Acting, Advanced Scene Study, Script Analysis and Directing) where he was recently nominated Best Director of a musical for his work on *Godspell*.

WILL ATKIN (*Sound Designer*) is very excited to begin his third Season with MTC, previously running sound for *Jekyll & Hyde*, *Always...* *Patsy Cline*, *Cabaret*, and *Ragtime* to name a few. He has stage managed *A View from the Bridge* (Westport Community Theatre), played Riff in *West Side Story* (Wilton Playshop). Will has a degree in Audio & Music Production, with a focus in jazz trombone from Western Connecticut State University.

ROBERT SCIGLIMPAGLIA
ATTORNEY AT LAW

101 Merritt 7 Corporate Park
Suite 300
Norwalk, Connecticut 06851
Phone: (203) 663-2803
Fax: (203) 505-6249
robscig@usa.net
TAX ID #: 06-1438026

Certified Worker's Compensation Specialist

Stamford Office:
Soundview Plaza
1266 E. Main Street
Suite 700R
Stamford, CT 06902
Phone: (203) 989-9171

New York Mailing Address:
1177 Avenue of the Americas
Fifth Floor
New York, NY 10036
Phone: (646) 688-4361
Fax: (646) 365-3364

Admitted in Connecticut and New York
Practicing since 1991

Certified Worker's Compensation Specialist
Personal Injury Law
Real Estate/Foreclosure
Entertainment/Trademark/Copyright Law

*Named #1 Real Estate Attorney in Norwalk by
legaldirectorate.com*

Named SUPERLAWYER™ from 2009-2022

*Named TOP 100 Trial Lawyer by
National Trial Lawyers Association*

10.0 Superb Rating on AVVO

Author of Amazon Best Selling Book:
"Voice Over Legal"

WHO'S WHO

ABBEY MURRAY (*Production Stage Manager*) is so excited to be stage managing for MTC! Abbey is a recent graduate of Western Connecticut State University with a degree in Stage Management and Design Technology. She recently made her Off-Broadway debut as the PSM for *Reverse Transcription!* She'd like to thank her loved ones for their endless support!

RJ ROMEO (*Director of Production / Lighting & Projection Designer*) is the current Technical Director/Associate Director of Production at Westport Country Playhouse, and returns to MTC for his third season as DP and fourth season as resident lighting designer. He was a CT Critics' Circle nominee for Best Projection Design for last season's *The Mountaintop*, and other past MTC credits include *Cabaret*, *Ragtime*, *Steel Magnolias*, *Fully Committed*, *RFK*, *Becoming Dr. Ruth*, *Tru*, *Tenderly*, *Buddy*, and *Falsettoland*. In addition, RJ has designed lighting for countless regional productions such as *Guys and Dolls*, *Twelfth Night*, and most recently *Frozen Jr.*

SEAN SANFORD (*Scenic & Props Design*) is a Prop Designer and Theater Artist based in NYC. Previously at MTC Sean was the Props Supervisor and Scenic Charge for *Tru*. Other credits include Assistant Prop Supervisor at Westport Country Playhouse, New York Theater Workshop, and the Classical Theater of Harlem, he is also on the Props team at *Blue Man Group*, NYC. Sean is thrilled to be back making Theater with MTC. To see more of his work go to seansanforddesign.com

DIANE VANDERKROEF (*Costume Design*) has been the resident costume designer for MTC MainStage and MTC School of Performing Arts since 2006. In the past she also worked with Kevin Connors on *Babes in Toyland* at the Stamford Center for the Arts.

She did designs for the Connecticut Grand Opera, including *Elixir of Love*, *Don Giovanni* and *Don Pasquale*. She has also been designer for Downtown Cabaret Theatre's MainStage and Children's Company, as well as various musicals for New England Lyrical Operetta. When not designing, Diane is a flight attendant for Delta Airlines.

ACTOR'S EQUITY ASSOCIATION (AEA) was founded in 1913, AEA represents more than 50,000 actors and stage managers in the United States. Equity seeks to advance, promote and foster the art of live theatre as an essential component of our society. Equity negotiates wages and working conditions, providing a wide range of benefits, including health and pension plans. AEA is a member of the AFL-CIO, and is affiliated with FIA, an international organization of performing arts unions. The Equity emblem is our mark of excellence. www.actorsequity.org



GREEK & ITALIAN CUISINE

www.jordansrestaurants.com

FREE DELIVERY & TAKE OUT

252 Flax Hill Road,
Norwalk, CT 06854
(203) 852-0003

DINE IN & TAKE OUT

369 Westport Avenue,
Norwalk, CT 06851
(203) 846-9557

“All the world’s a stage...”

William Shakespeare, As You Like It

And you’ve
done it brilliantly!

Wishing everyone at
Music Theatre
of Connecticut
a wonderful season!

The McAree Family



溢香軒


Village Gourmet

THE AUTHENTIC CHINESE FOOD

Tel: (203) 849-8788
(203) 849-8288

22 Chestnut Hill Road, (Rte 53)
Norwalk, CT 06851

(Cranbury Shopping Center, Next to Gregory's Store)

Business Hours
Mon. - Thurs.: 11:00 am - 10:00 pm
Fri. - Sat.: 11:00 am - 11:00 pm
Sun.: 12:00 noon - 10:00 pm

online order @

www.chinesefoodnorwalk.com

WHO'S WHO

MUSIC THEATRE OF CONNECTICUT

Executive Artistic Director	KEVIN CONNORS
Managing Director	JIM SCHILLING
Director of Production	RJ ROMEO
Box Office Manager & Administrative Manager	ALEX MONGILLO
Marketing & PR Consultant	JOE LANDRY
Cabaret Liaison	RAISSA KATONA BENNETT
Resident Scenic Designer	LINDSAY FUORI
Resident Costume Designer	DIANE VANDERKROEF
Resident Lighting Designer	RJ ROMEO
Resident Sound Designer	WILL ATKIN
Assistant Stage Manager	KEVIN CONNORS
Front of House Staff	STACY MILLER & NANCY SCIGLIMPAGLIA
MTC School Faculty	SHANNON COLFER, KEVIN CONNORS, ELISSA DEMARIA, ALEXANDRA FORTIN, SKYE GILLESPIE, DEBORAH LEVY, TRACEY MARBLE, ASHLEY MONDESTIN, ALEX MONGILLO, JIM SCHILLING, ERIN WILLIAMS
Board of Directors	DAN ARON, GREG COLE, KEVIN CONNORS, MARK CORPRON, IRENE DIXON, WENDY GERBIER, DAN GULLER, JACKIE HALL, JOHN HAMLIN, PETER McCLUNG, PAULETTE OLIVA, MARISA PARROTTA, BILL PIERZ, HENRY C. RAPP III, JIM SCHILLING, PETE SPERA, GREG SWEENEY

SPECIAL THANKS

Dan and Maureen Aron, John Hamlin and Greg Cole,
Lou Ursone and Curtain Call, Westport Country Playhouse,
Senator Richard Blumenthal, Congressman Jim Himes, Mayor Harry Rilling, Senator Bob Duff



saversTM
SHOP. REUSE. REIMAGINE.

99 Federal Road in Brookfield, CT
(203) 775-5910 stores.savers.com/ct/brookfield



VOLVO CARS WESTPORT

GRATEFULLY SUPPORTS

MTC MUSIC THEATRE
OF CONNECTICUT



ALL TONIGHT'S GUESTS ENJOY A

\$ 200 Store
Credit

Towards the Purchase of Any New or Used Vehicle

**THINK OF IT AS DINNER ON US NEXT
TIME YOU'RE COMING TO A SHOW!**

556 Post Rd. E, Westport, CT 06880
877-421-2113 | VolvoCarsWestport.com

We can't do it without you!

Music Theatre of Connecticut gratefully acknowledges the support of the following individuals, foundations and corporations.

FOUNDATION SUPPORT

The Adolph and Ruth Schnurmacher Foundation
The Amalia and Nicola Giuliani Fund
The Burry Fredrik Foundation
The Dunagan Foundation, Inc.
Fairfield County Community Foundation
The GE Foundation
General Atlantic Philanthropic Foundation
Renaissance Charitable Foundation Inc.
The Robert W. Baird Foundation
TD Bank Charitable Foundation

CORPORATE SUPPORT

BTIG
Connecticut Department of Economic and Community Development
Eversource Energy
Hearst Connecticut Media Group
The Hour
The IBM Corporation
Levin Capital Strategies
Melissa & Doug
Mizuho Investments
People's United Bank
RBC
Shoff-Darby Insurance
The Westport Inn

The 2022/2023 MTC MainStage Season is generously sponsored in part by



THE
BURRY FREDRIK
FOUNDATION

The State of Connecticut
Department of Economic and
Community Development

Connecticut
still revolutionary

HEARST | CONNECTICUT
MEDIA GROUP

An Invitation to Get in on the Act!

For over thirty-five years, Music Theatre of Connecticut has been bringing theatre to Fairfield County. Music Theatre of Connecticut is a 501(c)3 non-profit arts organization and is governed by a volunteer board of directors and, in addition, relies on a strong group of community volunteers who serve on a variety of production and fundraising committees. Please join us and become a part of the Music Theatre of Connecticut family.

Become an MTC Member today!

Visit www.musictheatreofct.com

TRANSPARENCY. PARTNERSHIP. ALIGNMENT.

GREG BAEKEY AND MATTHEW WUNDER ARE PROUD TO SUPPORT

MUSIC THEATRE OF CONNECTICUT FOR THE PAST 9 YEARS!

Most financial companies want you to invest in them. We'd rather invest in you.



Gregory Baekey

CLU®, ChFC®
203-221-5205
gregorybaekey@nm.com
274 Riverside Avenue, Ste. 4
Westport, CT 06880



Matthew Wunder

CLU®, CFP®
203-659-4010
matthewwunder@nm.com
274 Riverside Avenue, Ste. 4
Westport, CT 06880

07-1016 © 2022 Northwestern Mutual is the marketing name for The Northwestern Mutual Life Insurance Company (NM) (life and disability insurance, annuities, and life insurance with long-term care benefits) and its subsidiaries. Subsidiaries include: **Northwestern Mutual Investment Services, LLC (NMIS)** (investment brokerage services), a registered investment adviser, broker-dealer, and member of FINRA and SIPC. Northwestern Mutual Wealth Management Company® (NMWMC) (investment advisory and trust services), a federal savings bank. **Not all Northwestern Mutual representatives are advisors. Only those representatives with "advisor" in their title or who otherwise disclose their status as an advisor of NMWMC are credentialed as NMWMC representatives to provide investment advisory services.** NM and its subsidiaries are in Milwaukee, WI. Members of Wunder Financial use Wunder Financial as a marketing name for doing business as representatives of NM. Wunder Financial is not a registered investment adviser, broker-dealer, insurance agency or federal savings bank. To view detailed disclosures regarding individual representatives, view their information at wunderfinancial.nm.com.

2022/2023 MAINSTAGE SEASON MEMBERS

as of 1/19/2023

HERO

(\$10,000+)

Maureen and Dan Aron
Mr. Timothy Lewis
and Ms. Alisyn Camerota

ANGEL

(\$5,000 to \$9,999)

John Hamlin & Greg Cole

EXECUTIVE PRODUCER

(\$2,500 to \$4,999)

Marty Resnick

PRODUCER

(\$1,000 - \$2,499)

Jon & Kim Jodka
Barbara McAree
Paulette Oliva
& Peter McClung
Lynne Penczer
Bill Pierz
Jackie & Pete Spera
Gregory Sweeney
Tsantilas Family
Cynthia and Stan Twardy

DIRECTOR

(\$500 to \$999)

Sandra B.
Dr. Garrett Bennett
Amy Griffin
Dan Guller
Paul R. Hunter
Lynne Huxsaw
AJ Penna
& Son Construction
Lawrence Altman
& Gregory Rayner
Mimi Roth
Gary Cosgrave
and Dina Upton
Kathleen Walsh
Mike Mushak
& David Westmoreland

DESIGNER

Chris and Terri Bell
Nancy Brown
Paul & Julie Chelminski
Karen Como
Janet & Tim Densky
Molly Alger
and Jay Dirnberger
Irene Dixon
Drs. Marcia
& William Eckerd
Ben & Heather Frimmer
Mary Gladden
Jeanne Gnuse
Katherine Greco
Maryann
& Lawrence Grimaldi
Margaret Holton
Paul R. Hunter
Betty Kaye
Mary & Chris Kinney
Christine Klimek
& Theodore Klimek
Rita & Steve Lewis
Shirlee Maddren
Ken & Susie Ng
George & Irene Nova
Mark Overley
The Parrotta Family
Joan Pendergast
Chris Place
Anne Pollack
Edward A. Pulice MD
Becky Ruthven
Dr. Henry Rapp, III
& Jonathan Sichel
Deborah Spinola
Joan Wright

ACTOR

(\$100 to \$249)
Robin Ackerman
Durelle Alexander
Elizabeth Auber
Adele Bernstein
Stephen Bistran

Sharon Poole
and Michael Bittenbender
Kimberly
& Paul Bryant-Smith
Susan M. Byron
Raj Chitnis
Evan Cohen
Jerome H. Ewing
Diane Flagello
Dorothy & Jon Fox
Wally Frey
Joanne Fuss
Elaine Ganat
Susan Garthwaite
Joyce Generoso
Katherine Golomb
Joannie Greene
Susan Haefner
Dorothy Hafner
Samantha Lee Heilweil
Margaret Kelley
and Peter Hyman
Betsy Knapp
Joanne Koleszar
Mary Makowka
Virginia Martin
Mary Beth Mollica
Linda O'Shaughnessy
Mary Oster
Penny Palmer
Margo Parson Shea
Bruce Peabody
Stephanie Rival
Valerie & Ken Roffe
Francisco & Lucila Sabin
Annette Sandt
Carol Schnaer
Diane & Steven Shaby
Alice E. Stokes
Nancy Usic
Joan and Marshall Weiss
Elizabeth Wernqvist
Bruce & Nancy Zepke



Your Inspiration. Our Expertise.

Lumber | Building Materials | Decking & Fencing
Windows & Doors | Moulding | Kitchens
Architectural Hardware | Paint & Design

RingsEnd.com | 800-390-1000



SAUGATUCK
COMMERCIAL
REAL ESTATE LLC

LICENSED IN CT, NY, MA, RI, NH, FL

9 Burr Road
Westport, CT 06880
203.222.4190
www.saugatuckcommercial.com
Proud members of ICSC, NEFA, REFA, WBENC



FULL-SERVICE COMMERCIAL REAL ESTATE BROKERAGE

SCRE IS PLEASED TO CONTINUE ITS SUPPORT OF MTC



**Here's to Another Terrific Season of
Top-Notch Performances!**

CONTRIBUTORS BETWEEN 9/1/2021 AND 9/1/2022

(Includes Members from past MainStage Seasons)

Randy Adams	Steven Boushell	Diane Donovan	Grimaldi
Rohan Agrawal	The Brands	Susan Dorn	Tristan Guevara
Oluseyi Alege	Nancy A. Brown	Shirin Dorne	Dan Guller
Durelle Alexander	Bart Brown	Nicolas Dromard	Vignesh Gunda
Belkis Almonte	Lisa Brown	Bob & Tracey Duff	Jeff Gurner
Meryl Alpert	John Bulgarelli	Cade Dugan	Michelle Gurner
Lawrence Altman	Carol Burgess	Timothy Dugan	Mary Ellen Guzewicz
Larry Altman & Greg	Suzanne Burkhardt	Marcia and Bill Eckerd	Susan Haefner
Rayner	Kimberly Burns and Jim	Wendy Engel	Calem Hall
Nicholas Amico	Ballard	Emily Epstein	Amy Hamlin
Mary Antonucci	Ella Cahill & Family	Logan Epstein	Liz H
Jim Arata	Deirdre Campbell	Jerome H. Ewing	Clay Hamlin
Carolyn & Gavin Arneith	Max Canady	Lisa Fairchild and Kim	Sean Hannon
Dan Aron	Martha Castillo	Titus	Aidan Harmon
Anna Aron	Julie Chelminski	Richard Ferguson	Garrett Harper
Maureen Aron	Charles Chinzi	Michael Ferry	Cole Harris
Ashley Aron	Philip Chua	Cherie A Flavin	Mr. Gregory Hauck
Alexa Aron	Sharon Clark	Jackie Flournoy	Owen & Dorit Heimer
Deb Price	John & Kylie Closson	Mary Foss-Skiftesvik	David B Heuvelman
Cliff Atlas	John Cody	Wally Frey	Joe Shafranek
Nabil A Atweh MD	John Hamlin & Greg	Michele Fried	& Thomas Hickey
Gail Marion Ayotte	Cole	Donald Fries	Pamela Hill
Gregory Baekey	Erika Collins	Benjamin Frimmer	& Michael Lorr
William Bales	Karen Como	Joanne Fuss and	Elizabeth Hilton
Susan Ball	Chris & Jim Corgel	Joannie Pica	Mary Hoermann
Tyler Barishaw	Rachel Cowen	Randy Kaye	Margaret Holton
Sarah Beach	Steve Crawford	Gladys Gallagher	David Holzemer
Thomas Beck	Anthony Howard Crisci	Elaine Ganat	Rebecca Hoodwin
Amy Griffin and Scott	Michael & Courtney	David Garlock	Terri Hoops
Behson	Cronin	Susan Garthwaite	Linda Hudson and
Ari & Clair Benmosche	Dolly Curtis	Wendy Gerbier	Randy Burnham
Denise V Benmosche	Andrea Light & Jack	Christy Gibb	Paul R. Hunter
Dr. Garrett Bennett	Cutler	Grace Givan	Lynne Huxsaw
Eloise Cole Bennett	Robert Cygan	Mary Gladden	Oleksandr Ierenkov
Ganet Bennett	The Deitch & Urquhart	Joanna Gleason	Robert Jennings
Ruth Berliner	Family	Matthew Glickman	Susan Jimenez
Adele Bernstein	Carole Dell'Aquila	Jeanne Gnuse	Jon & Kim Jodka
Lisa Bettke	Stephen DeMaria	Emily S Gordon	Denise Johnson
Jean Bickley	Susie Denardo	Brandon Gorz	Justin Johnson
Sandra Billings	Janet & Tim Densky	Peter Gould	Dean Kauffman
Ethan Bindernagel	Alice Deutsch	Burton Grad and Carol	Betty Kaye
Michael Bittenbender	Bernard Deverin	Anne Ances	The Keasler Family
Kent Blocher	Eva Susanne Dewitz	Arlene Graffa	Mary Ellen Keenan
Lee Bloomberg	Rishabh Dhankani	Katherine Greco	Margaret Kelley
Lynda Shannon	Al's Angels	Matt Greenberg	Kesselmark Family
Bluestein	Molly Alger and Jay	Lindsay Arakelian Grega	Alex Kessinger
Carter Bonecutter	Dirnberger	Amy Griffin	Mohammad Safiullah
Daniel Borhi	Cheryl Dixon	Lawrence & Maryann	Khan

Gold's DELICATESSEN

421 Post Road East, Westport
(203) 227-0101

Dine In • Take Out • Custom Catering



SCAP

CHRYSLER • DODGE • JEEP • RAM



CONNECTICUT'S WRANGLER HEADQUARTERS

WWW.SCAPCHRYSLERJEEP.COM

TRULY GREEK

NORWALK, CT

CONTRIBUTORS BETWEEN 9/1/2021 AND 9/1/2022

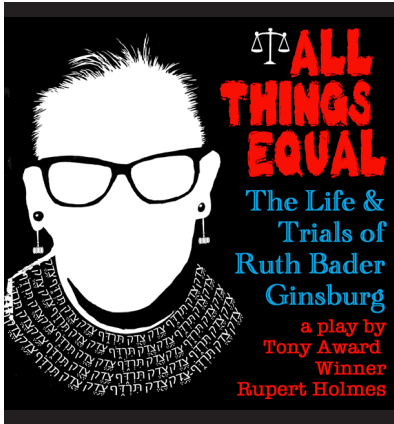
(Includes Members from past MainStage Seasons)

Randy Adams	Steven Boushell	Diane Donovan	Maryann Grimaldi
Rohan Agrawal	The Brands	Susan Dom	Tristan Guevara
Oluseyi Alege	Nancy A. Brown	Shirin Dorne	Dan Guller
Durelle Alexander	Bart Brown	Nicolas Dromard	Vignesh Gunda
Belkis Almonte	Lisa Brown	Bob & Tracey Duff	Jeff Gurner
Meryl Alpert	John Bulgarelli	Cade Dugan	Michelle Gurner
Lawrence Altman	Carol Burgess	Timothy Dugan	Mary Ellen Guzewicz
Larry Altman & Greg	Suzanne Burkhardt	Marcia and Bill Eckerd	Susan Haefner
Rayner	Kimberly Burns and Jim	Wendy Engel	Calem Hall
Nicholas Amico	Ballard	Emily Epstein	Amy Hamlin
Mary Antonucci	Ella Cahill & Family	Logan Epstein	Liz H
Jim Arata	Deirdre Campbell	Jerome H. Ewing	Clay Hamlin
Carolyn & Gavin Arneith	Max Canady	Lisa Fairchild and Kim	Sean Hannon
Dan Aron	Martha Castillo	Titus	Aidan Harmon
Anna Aron	Julie Chelminski	Richard Ferguson	Garrett Harper
Maureen Aron	Charles Chinzi	Michael Ferry	Cole Harris
Ashley Aron	Philip Chua	Cherie A Flavin	Mr. Gregory Hauck
Alexa Aron	Sharon Clark	Jackie Flournoy	Owen & Dorit Heimer
Deb Price	John & Kylie Closson	Mary Foss-Skiftesvik	David B Heuvelman
Cliff Atlas	John Cody	Wally Frey	Joe Shafranek
Nabil A Atweh MD	John Hamlin & Greg	Michele Fried	& Thomas Hickey
Gail Marion Ayotte	Cole	Donald Fries	Pamela Hill
Gregory Baekey	Erika Collins	Benjamin Frimmer	& Michael Lorr
William Bales	Karen Como	Joanne Fuss and	Elizabeth Hilton
Susan Ball	Chris & Jim Corgel	Joannie Pica	Mary Hoermann
Tyler Barishaw	Rachel Cowen	Randy Kaye	Margaret Holton
Sarah Beach	Steve Crawford	Gladys Gallagher	David Holzemer
Thomas Beck	Anthony Howard Crisci	Elaine Ganat	Rebecca Hoodwin
Amy Griffin and Scott	Michael & Courtney	David Garlock	Terri Hoops
Behson	Cronin	Susan Garthwaite	Linda Hudson and
Ari & Clair Benmosche	Dolly Curtis	Wendy Gerbier	Randy Burnham
Denise V Benmosche	Andrea Light & Jack	Christy Gibb	Paul R. Hunter
Dr. Garrett Bennett	Cutler	Grace Givan	Lynne Huxsaw
Eloise Cole Bennett	Robert Cygan	Mary Gladden	Oleksandr Ierenkov
Ganet Bennett	The Deitch & Urquhart	Joanna Gleason	Robert Jennings
Ruth Berliner	Family	Matthew Glickman	Susan Jimenez
Adele Bernstein	Carole Dell'Aquila	Jeanne Gnuse	Jon & Kim Jodka
Lisa Bettke	Stephen DeMaria	Emily S Gordon	Denise Johnson
Jean Bickley	Susie Denardo	Brandon Gorz	Justin Johnson
Sandra Billings	Janet & Tim Densky	Peter Gould	Dean Kauffman
Ethan Bindernagel	Alice Deutsch	Burton Grad and Carol	Betty Kaye
Michael Bittenbender	Bernard Deverin	Anne Ances	The Keasler Family
Kent Blocher	Eva Susanne Dewitz	Arlene Graffa	Mary Ellen Keenan
Lee Bloomberg	Rishabh Dhankani	Katherine Greco	Margaret Kelley
Lynda Shannon	Al's Angels	Matt Greenberg	Kesselmark Family
Bluestein	Molly Alger and Jay	Lindsay Arakelian Grega	Alex Kessinger
Carter Bonecutter	Dimberger	Amy Griffin	Mohammad Safiullah
Daniel Borhi	Cheryl Dixon	Lawrence &	Khan



THE RIDGEFIELD PLAYHOUSE

Non-profit 501 (C) (3)



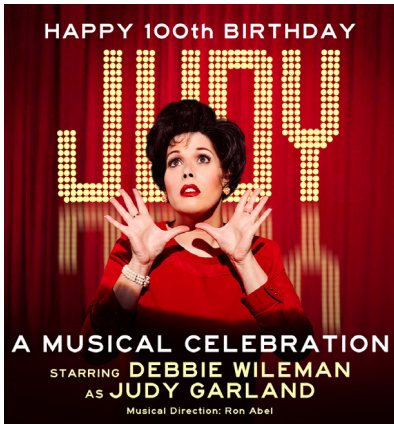
MARCH 3 @ 8PM

Over the course of ninety fascinating and often funny minutes, Michelle Azar conveys a sense of RBG's life and its many trials.



MARCH 26 @ 4PM

For fifty years, Ballet Hispanico has been the leading voice intersecting artistic excellence and advocacy and is now the largest Latinx cultural organization in the United States.



APRIL 27 @ 7:30PM

It's the worldwide celebration of the 100th Birthday of the legendary Judy Garland, starring internet sensation, Debbie Wileman.



MAY 19 @ 8PM

Multifaceted jazz pianist and composer returns to the Playhouse for his first headline show!



SCAN HERE
FOR THE COMPLETE
SEASON LINE-UP!

203.438.5795
RIDGEFIELDPLAYHOUSE.ORG

banners pocketfolders
event signage copies menus magnets
raffle tickets
business cards
manuals invitations flyers notepads
postcards eddm labels printing
direct mail calendars
envelopes letterheads
posters wedding brochures
stickers post-it pads
promotional products



A Norwalk institution that's been getting it right for over 30 years!

TRADITIONAL & DIGITAL PRINTING
FULL SERVICE COPY CENTER
LARGE FORMAT PRINTING

167 Main Street, Norwalk, CT 06851

T: 203.838.2795 | E: Norwalk@MinutemanPress.com

Norwalk.MinutemanPress.com | [Facebook.com/MMPNorwalk](https://www.facebook.com/MMPNorwalk)



Home Team Advantage
AT COMPASS

Exceptional Real Estate Advisors
in Fairfield County

WHO'S WHO IN THE CAST



Joan Wright



Ellen Fusco



John Foran



Ginny Kelly

“YOUR HOME IS OUR STAGE”

HomeTeamAdvantage@Compass.com

203.247.5868

COMPASS

Home Team Advantage is a team of real estate licensees affiliated with Compass Connecticut, LLC, a licensed real estate broker and abides by Equal Housing Opportunity laws.



**"Don't dream it,
be it..."**

**The Rocky Horror Picture
Show**

**Wishing
everyone at
MTC a wonderful
season!**

**Henry Rapp, III
&
Jonathan Sichel**



**CURTAIN
CALL**

Kweskin Theatre
Dressing Room Theatre

curtaincallinc.com

MTC FANS SAVE 10% OFF TICKETS WITH CODE MTC

(Applies to new sales only; cannot be combined with other discounts.)

Curtain Call's 32nd Season - Sterling Farms Theatre Complex

CELEBRATING 50 YEARS IN THE KWESKIN THEATRE



First time at Curtain Call



**GROUNDHOG
DAY**
THE MUSICAL

Based on the hit film!

AREA PREMIERE!

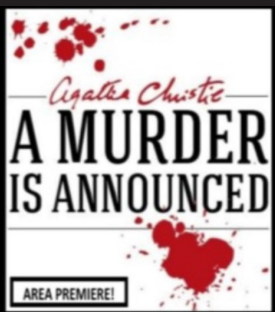


First time at Curtain Call



First time at Curtain Call

**SHE
LOVES
ME**



Agatha Christie

**A MURDER
IS ANNOUNCED**

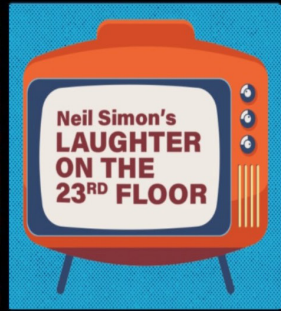
AREA PREMIERE!



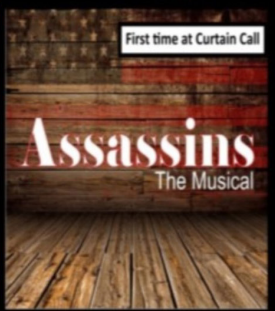
**The
Wisdom
of Eve**

STAGE DOOR

Area Premiere!!!

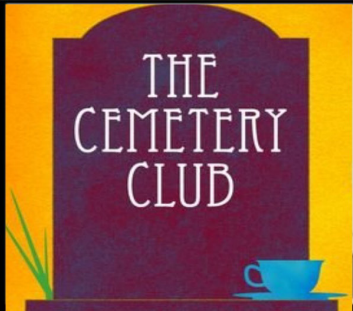


Neil Simon's
**LAUGHTER
ON THE
23RD FLOOR**



First time at Curtain Call

Assassins
The Musical



**THE
CEMETERY
CLUB**

Stamford's longest-running and only year-round, nonprofit producing theatre company.

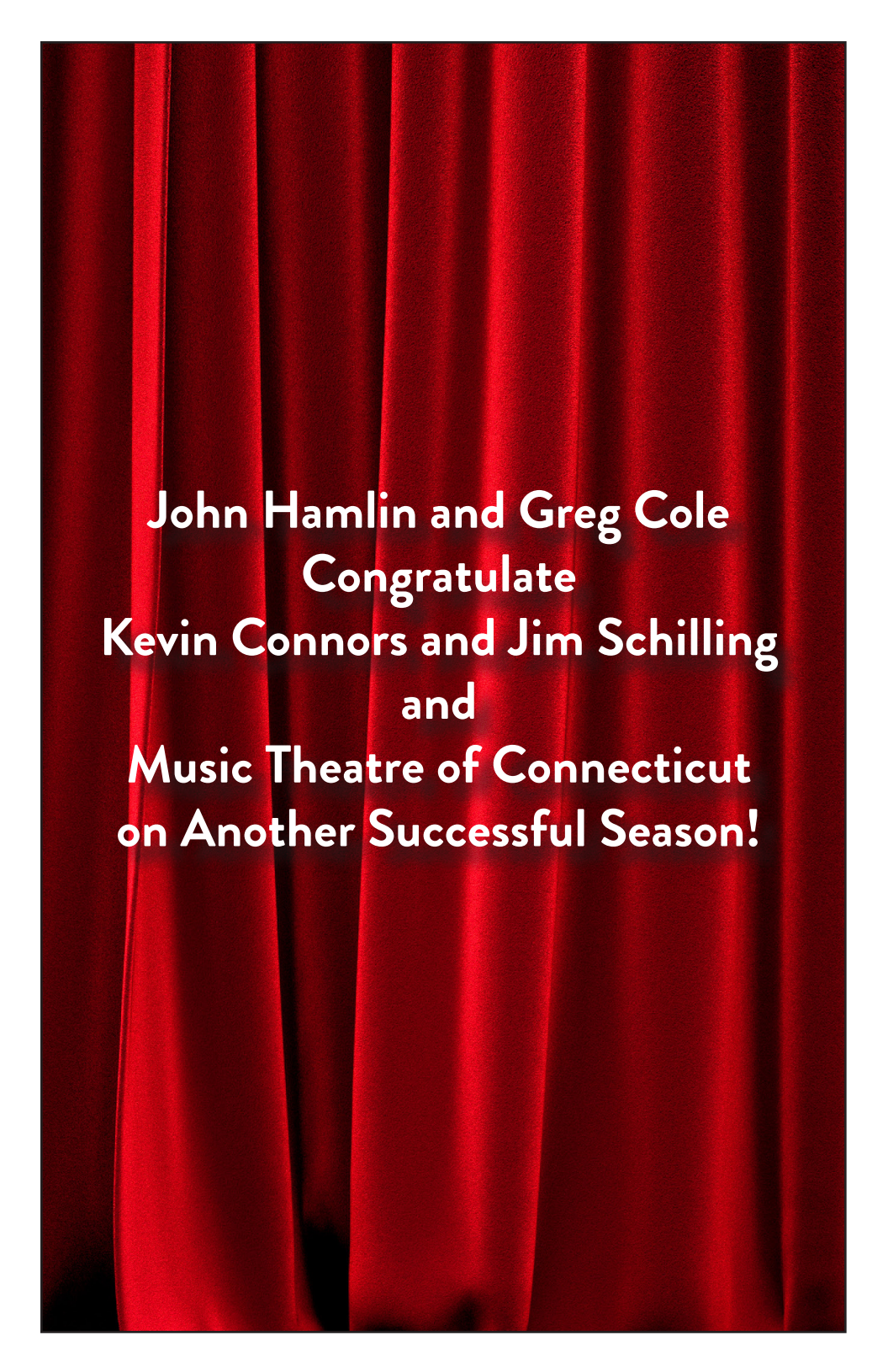
WINNER:

- BEST LOCAL THEATRE 10 YEARS IN A ROW
- GOVERNOR'S AWARD FOR EXCELLENCE
- ACE AWARD FOR EXCELLENCE IN ARTS & CULTURE

Produced in cooperation with The City of Stamford

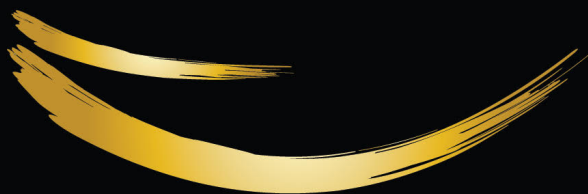
Sponsored in part by the CT Office of the Arts / Department of Economic Development

203-461-6358 www.curtaincallinc.com 1349 Newfield Avenue, Stamford, CT

A background of rich red, vertically pleated curtains, likely velvet or a similar plush fabric, with soft lighting creating subtle shadows and highlights in the folds.

**John Hamlin and Greg Cole
Congratulate
Kevin Connors and Jim Schilling
and
Music Theatre of Connecticut
on Another Successful Season!**

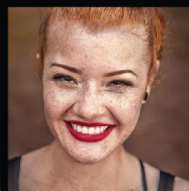
SHOW OFF YOUR SMILE



ADVANCED DENTISTRY
OF FAIRFIELD COUNTY

— ONE SMILE AT A TIME —

Henry C. Rapp III, D.M.D.
General and Cosmetic Dentistry



AdvancedDentistryFairfield.com

161 Sherman Street • Fairfield • CT • 06824

203•259•5026

**Birinyi Associates is pleased to support
Music Theatre of Connecticut**

B I R I N Y I
A S S O C I A T E S I N C.

Please visit us at Birinyi.com
Westport, CT